



VIRGINIA DEPARTMENT OF  
SOCIAL SERVICES

# Virginia Commission on Youth Kinship Update

October 22, 2024

---

## KIN FIRST CULTURE

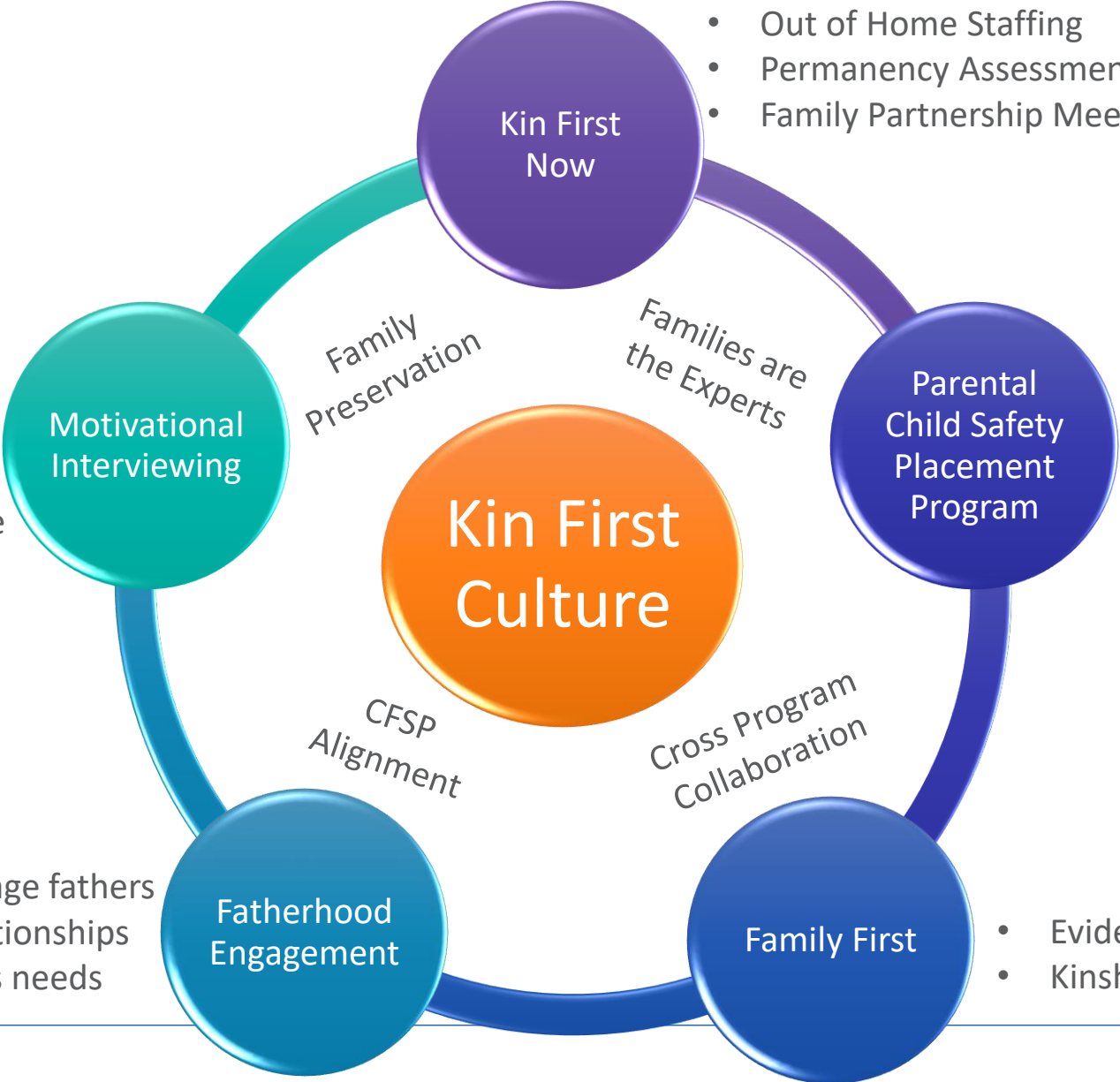
In Virginia's Kin First culture, we recognize families are the experts when it comes to their needs, should always be included in decision-making and empowered to rely on one another for support.



# Building a Kin First Culture



- Engagement
- Family driven decisions
- Working towards change



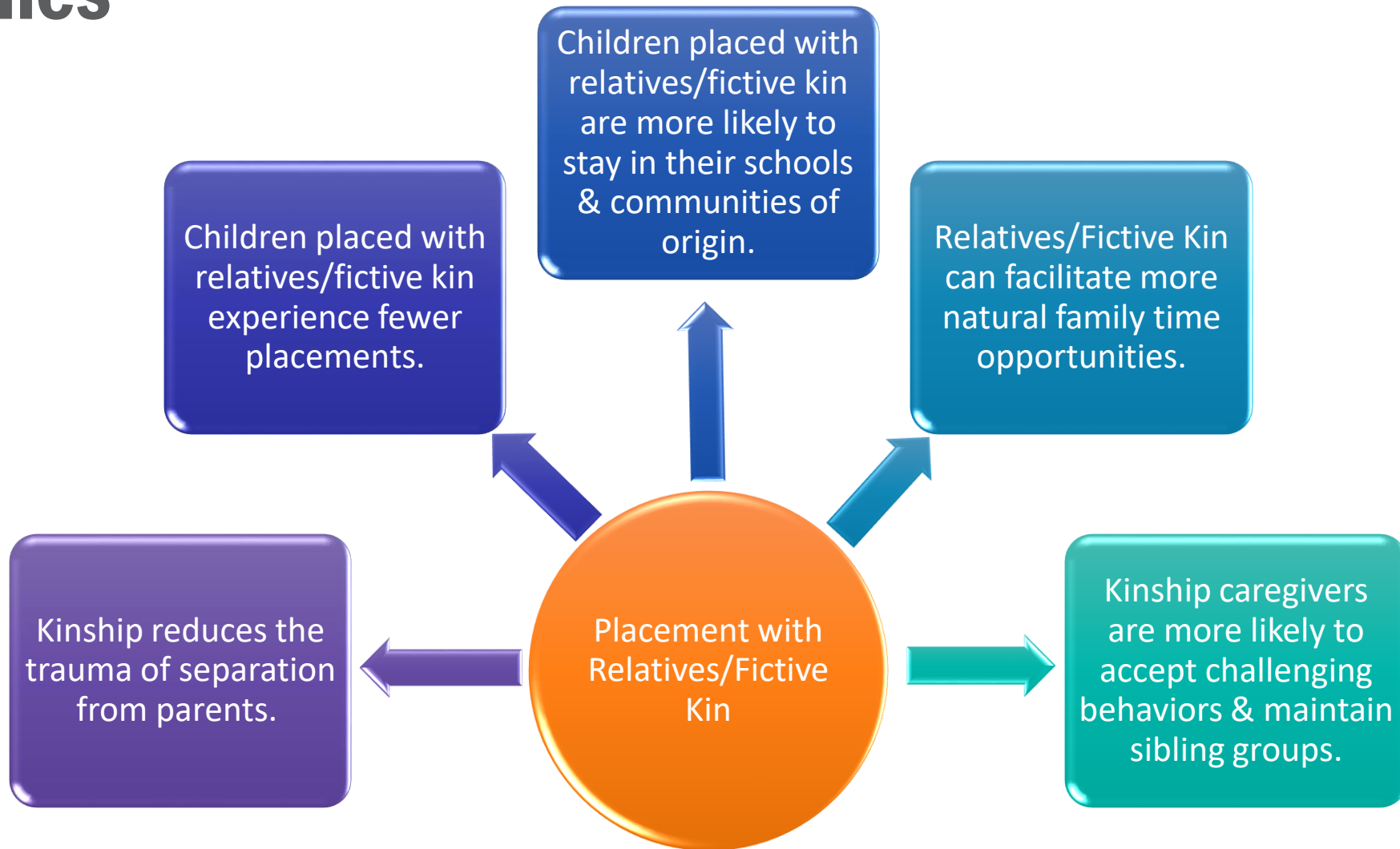
- Out of Home Staffing
- Permanency Assessment Tool
- Family Partnership Meetings

- Parental Child Safety Placement Agreement
- Permanency Assessment Tool
- Criminal History Inquiry
- Family Partnership Meetings
- Reconvening of RMP

- Locate and engage fathers
- Strengthen relationships
- Support father's needs

- Evidence-Based Programs
- Kinship Navigators

# Outcomes





# Kin First Now

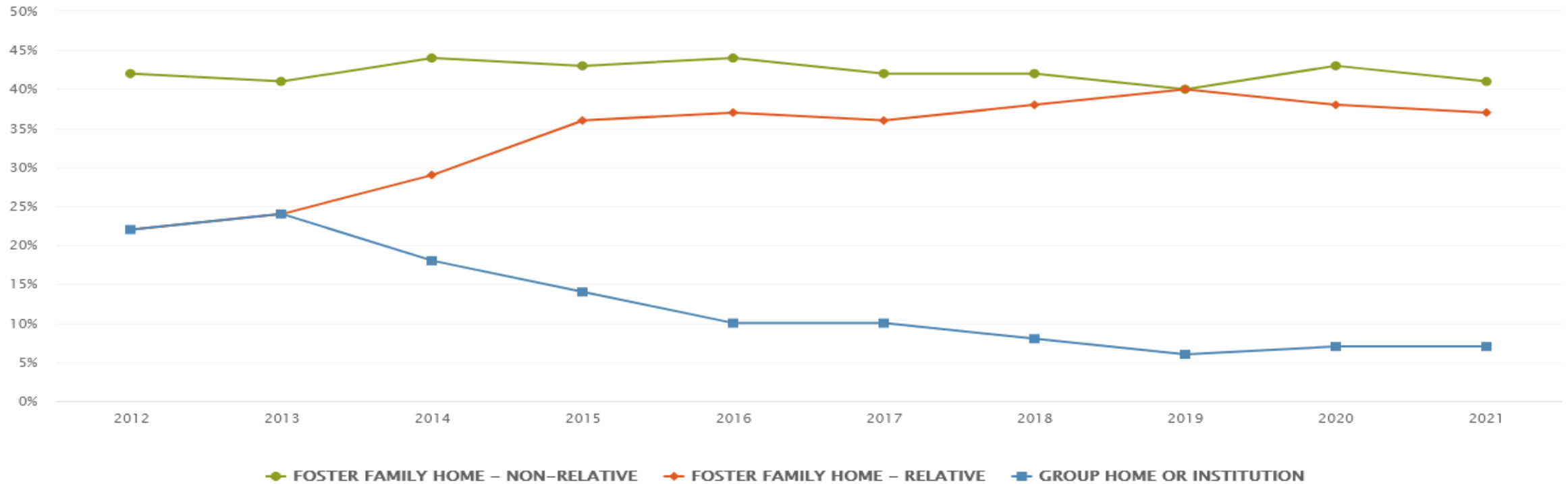
# KIN FIRST NOW OVERVIEW

---

- Enhance and/or create internal processes that reinvest staff time on search, discovery, and assessment of relatives/fictive kin through a teaming approach
- Urgent discovery and transparent engagement of family at first point of contact
- Engagement and Assessment of family and natural supports in planning for permanency

# National Kinship Foster Care Averages

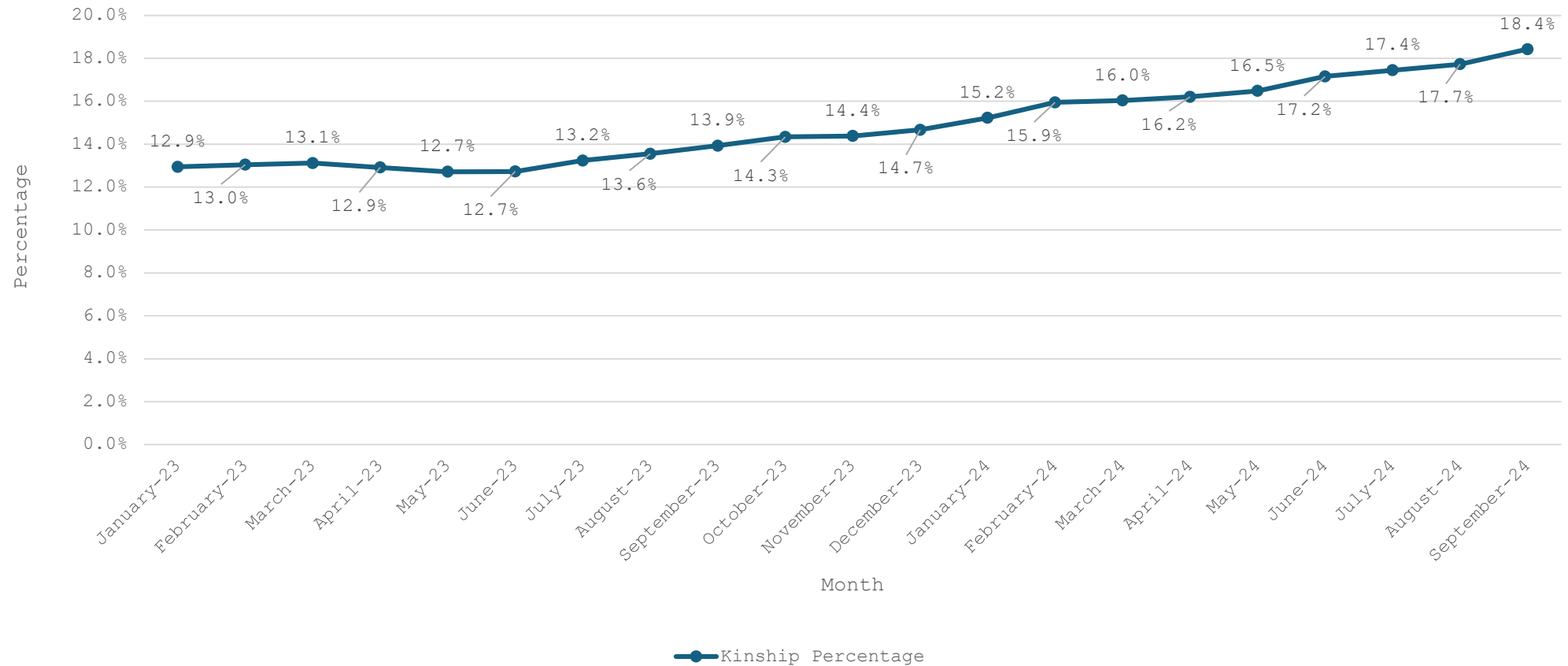
CHILDREN IN FOSTER CARE BY PLACEMENT TYPE (PERCENT) - 2012-2021



National KIDS COUNT from  
[datacenter.aecf.org](https://datacenter.aecf.org)

# Kinship Percentage

Percent of Children Under 18 in a Kinship Placement

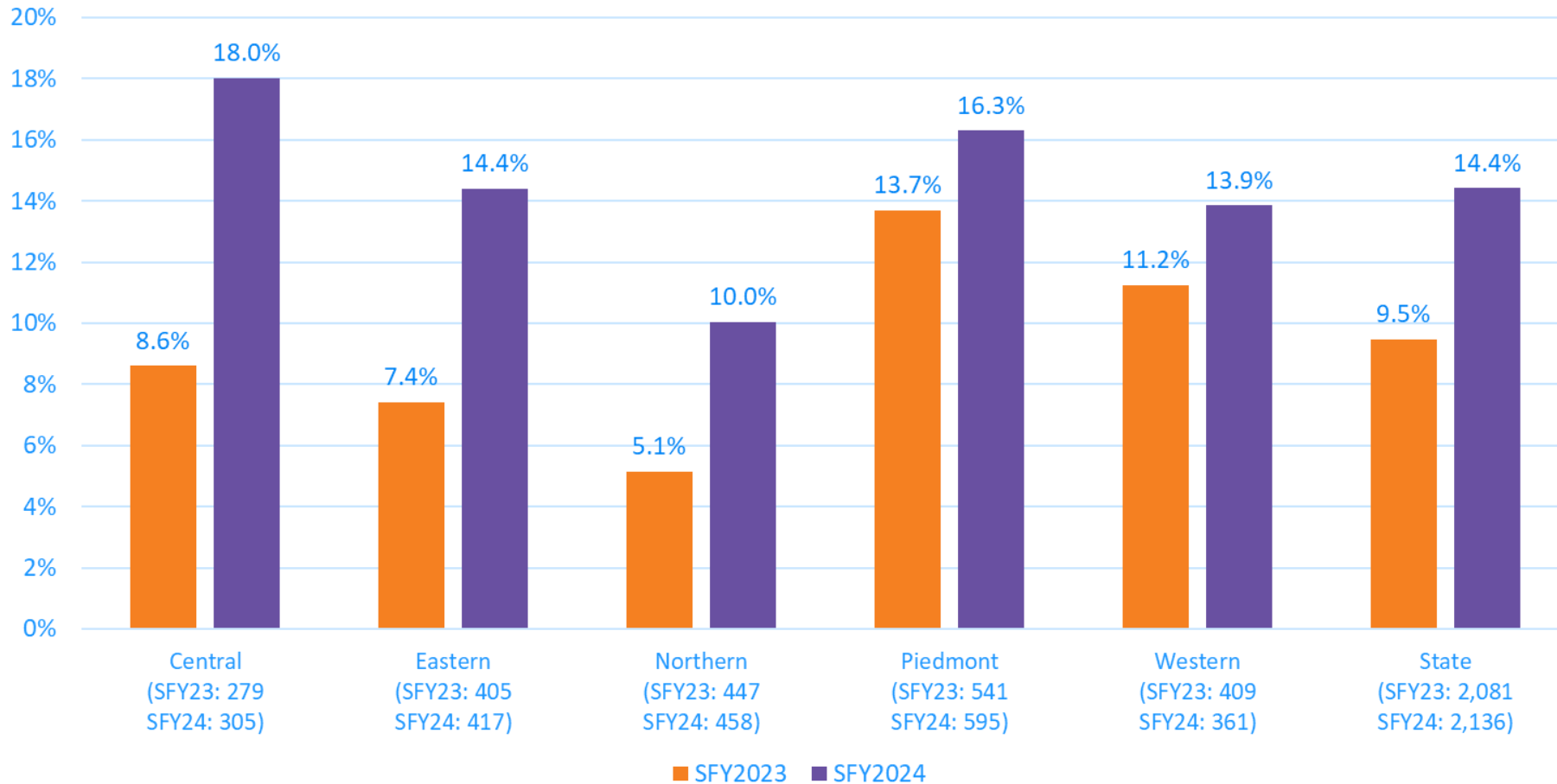


Source: SafeMeasures Care Types (Subsets: 0 - 17 Years Old; Case Type: Foster Care and Dual In-Home and Foster Care).



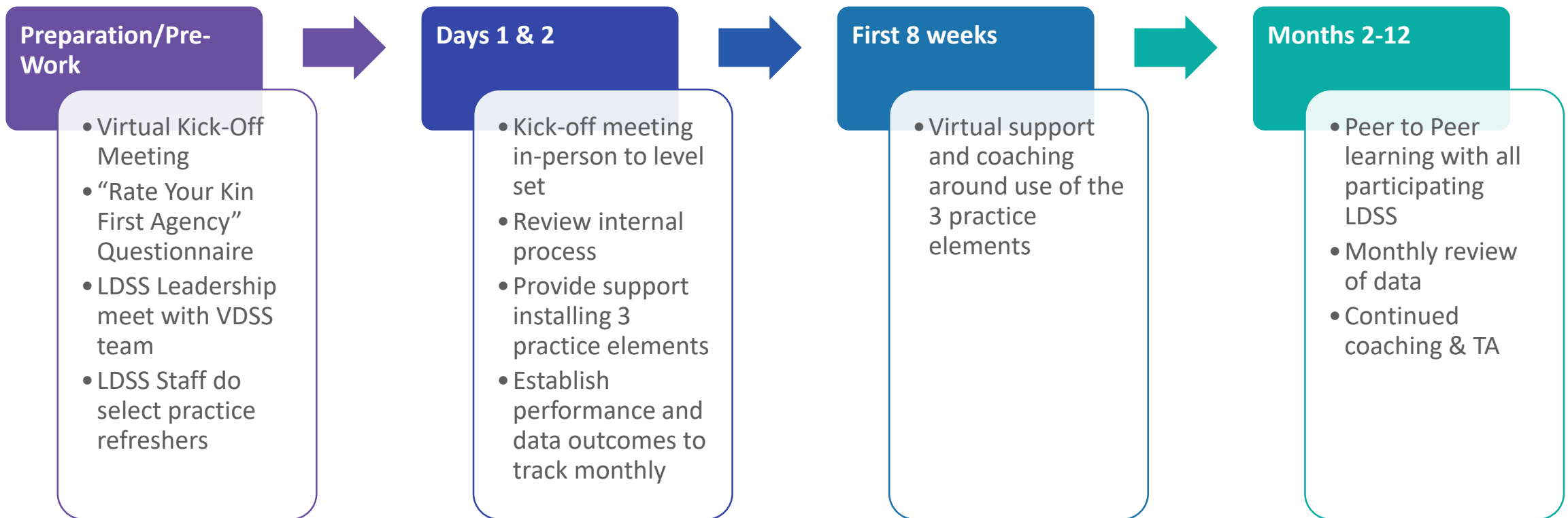
# First Placement for New Entries - Kinship

Percentage of New Entries First Placed in a Kinship Placement (Under 18)  
SFY2023 and SFY2024



Source: Kin First Now Power BI Dashboard (refresh date 7/22/2024). The total number of new entries is listed under the region by SFY. This data is determined by the placement sequence number and entry date in placement. It may not include children that re-entered foster care.

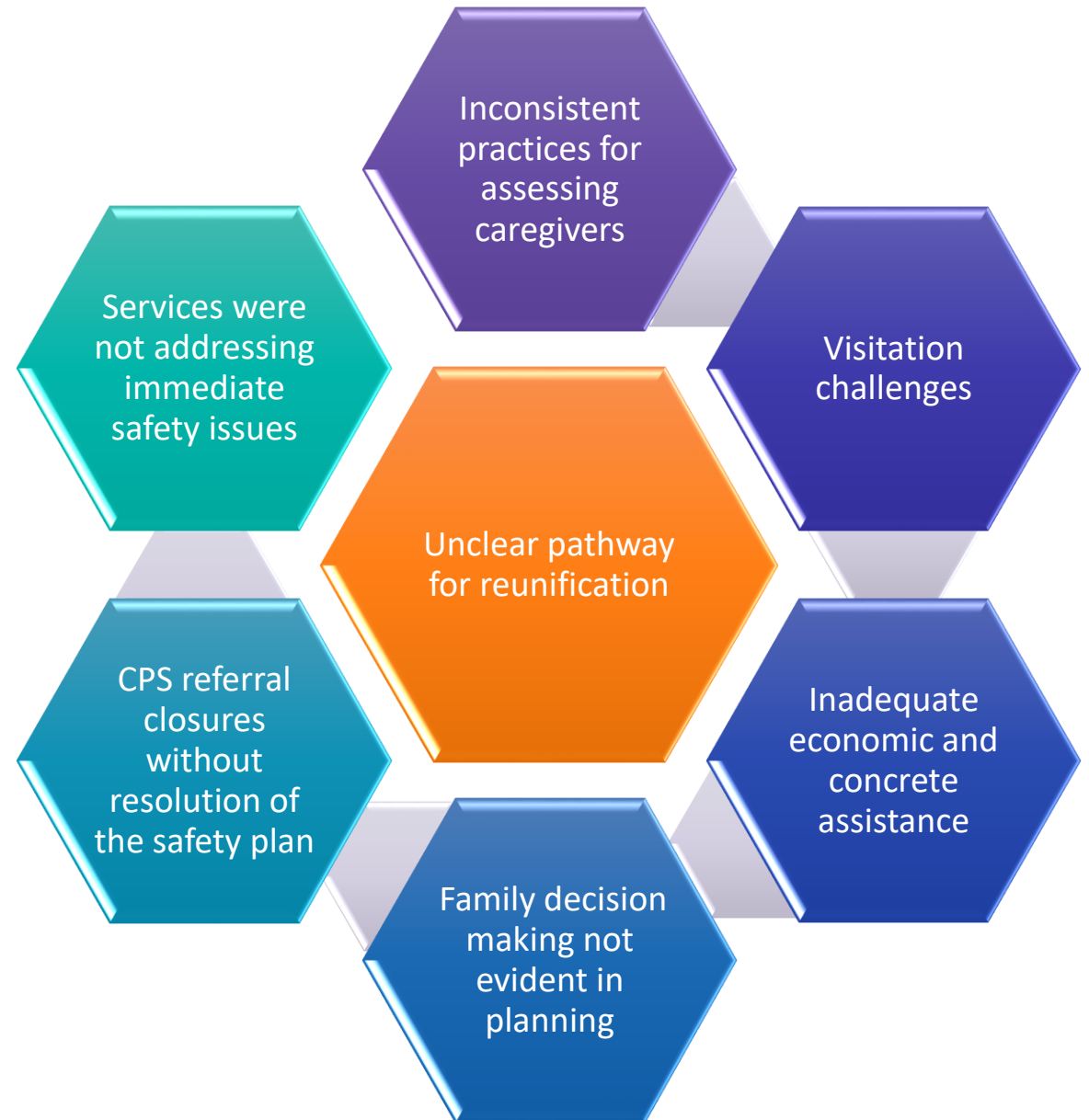
# KIN FIRST NOW TIMELINE



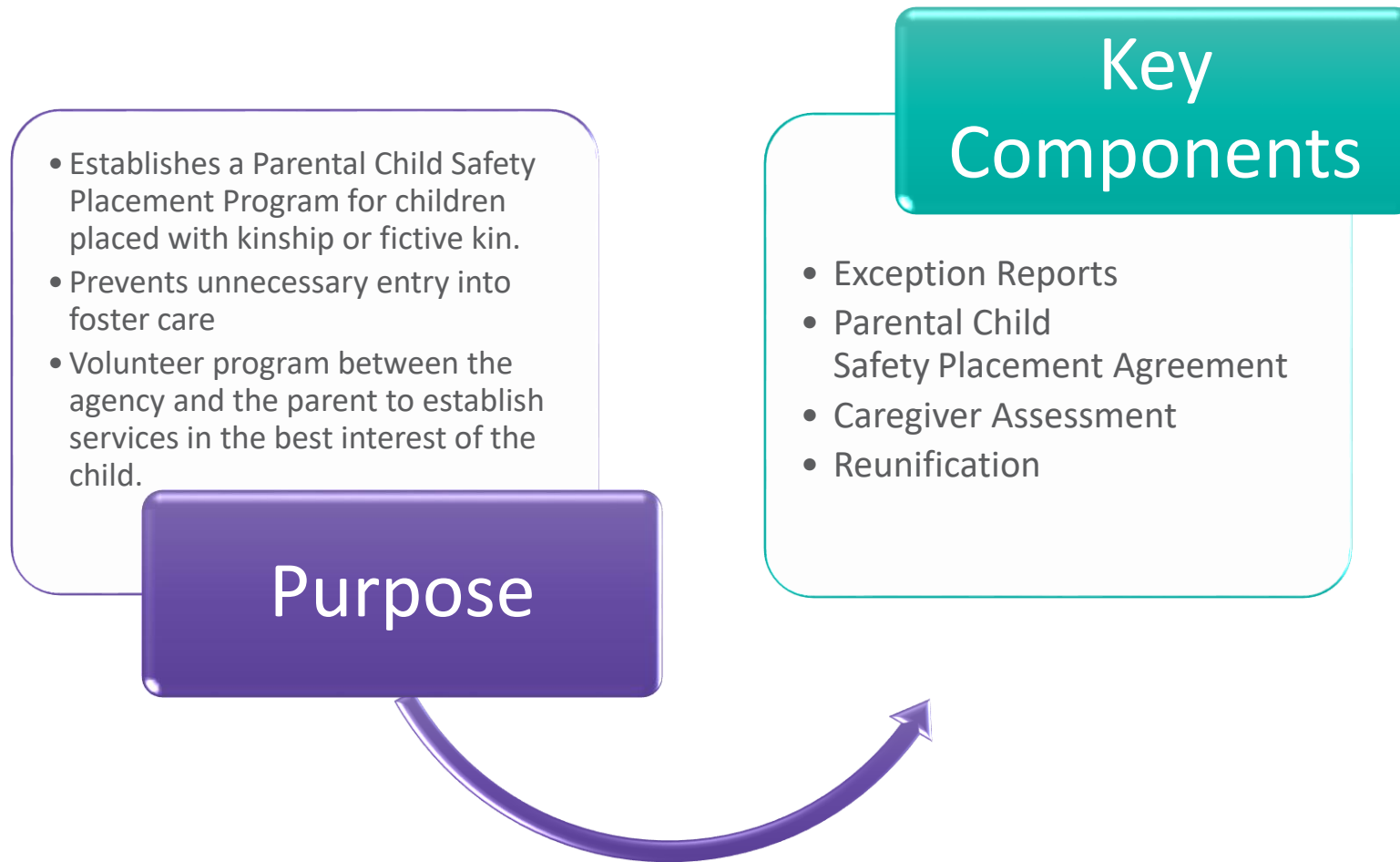
---

# Parental Child Safety Placement Program

# Basis for the Legislation



# SB39/HB27 Parental Child Safety Placement Program



## Action Item # 1

### Child Protective Services, 22VAC40-705 Exempt

## SUBSTANTIVE CHANGES

- » Creates 22VAC40-705-200 to establish the Parental Child Safety Placement Program pursuant to §§ 63.2-1531 -- 63.2-1536 of the Code of Virginia.
  - Outlines the process for developing a Parental Child Safety Placement Agreement to be established voluntarily between parents, relative/fictive kin caregivers, and local departments of social services (LDSS) to provide services and supports to prevent a child's entry into foster care when it has been determined that the child cannot remain safely in their current home.
  - Outlines the process for the assessment of relative/fictive kin caregivers to determine whether the proposed caregiver is qualified to care for the child, willing to have a positive and continuous relationship with the child, and willing to protect the child from abuse and neglect, including the process for criminal and child welfare history inquiries for each adult in the proposed caregiver's household
  - Outlines the process for convening an internal out-of-home staffing and a facilitated meeting with the family at all critical decision-points to support the development of a family-driven plan for the child, family, and relative/fictive kin caregivers.
  - Outlines the requirement that the LDSS visit the relative/fictive kin caregivers' home within two weeks of the Parental Child Safety Placement Agreement being established and at least one time per month thereafter to ensure the home environment is safe for the child.
  - Outlines the process for how Relative Maintenance Support Payments will be prioritized based on available funding.

---

**Establish guardrails to protect children and families**

**Promote family driven decisions**

**Increase placements with kin and fictive kin**

**Child-focused and family centered practice**

**Preservation of parental rights**

**Transform prevention services for families**

**Establish streamlined processes for LDSS**

# **Goals of the Parental Child Safety Placement Program (PCSPP)**

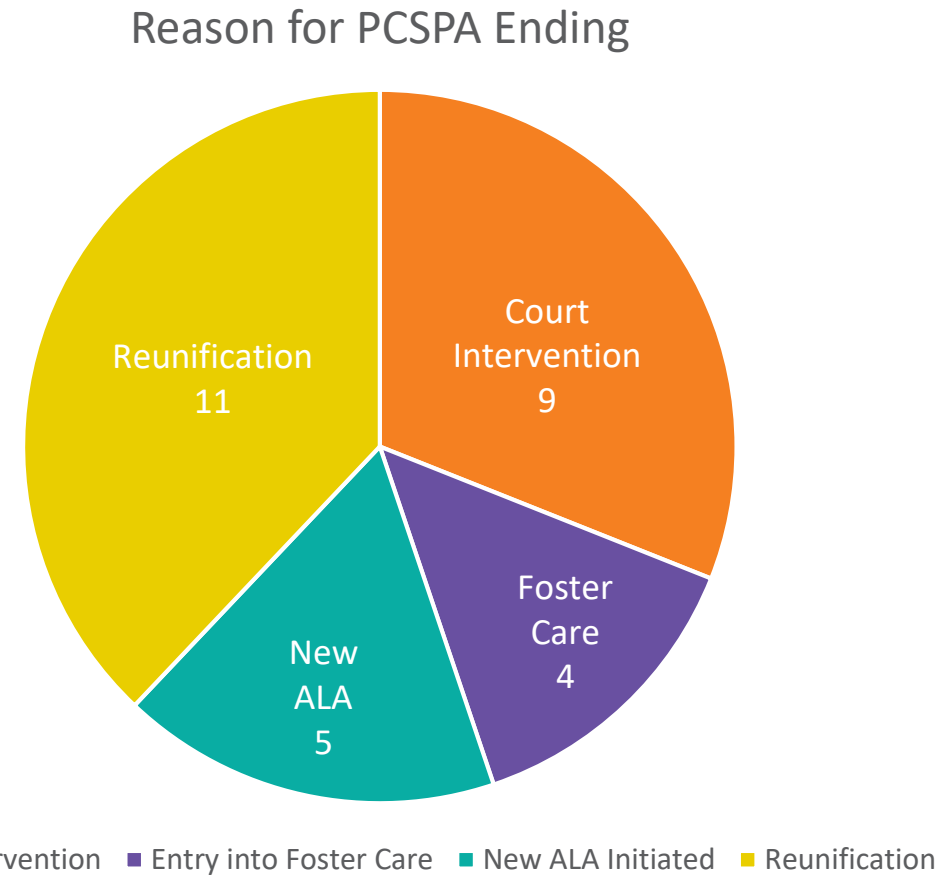
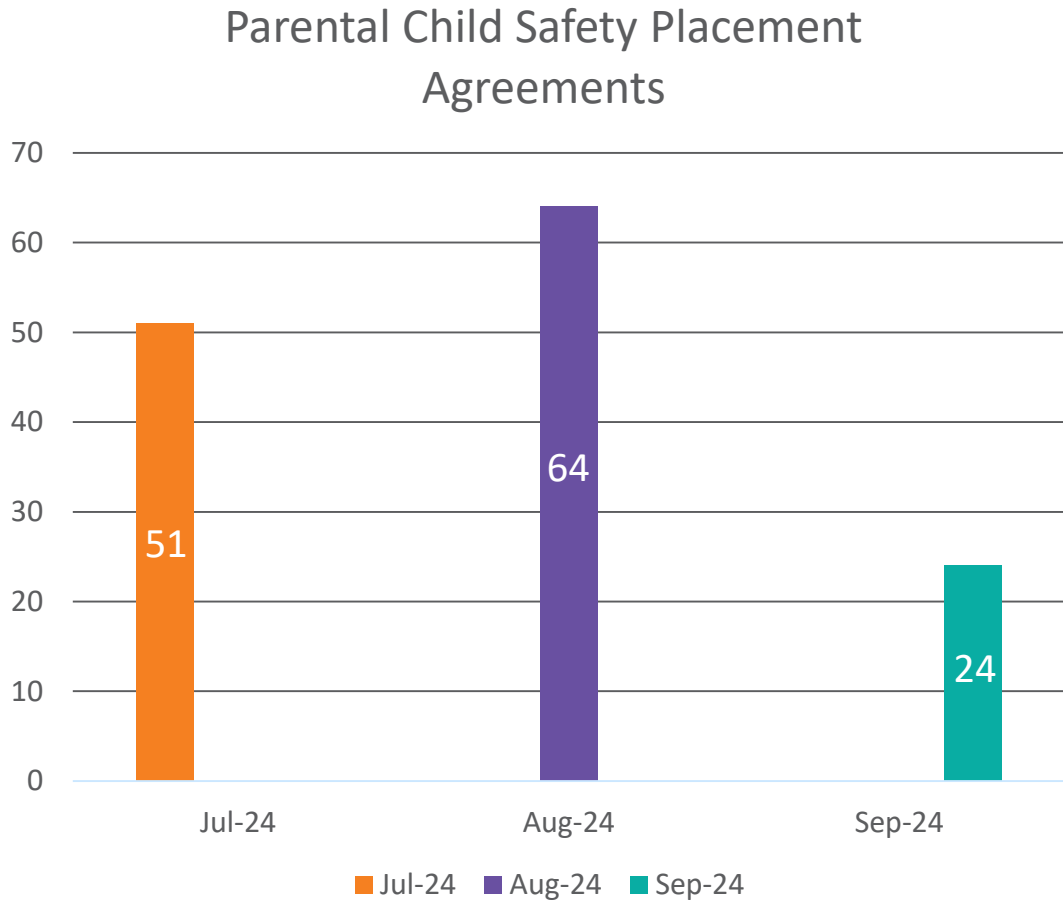


# Intersection of KFN and the Parental Child Safety Placement Program





# Initial Parental Child Safety Placement Program Data



\*Please note that this is live data and will continue to change as staff enter case information

# Relative Maintenance Program (RMP)



---

Relatives and fictive kin who are participating in the Parental Child Safety Placement Program are eligible

---

Family Services Specialist are responsible for informing caregivers of financial assistance available

---

Relative and fictive kin caregivers who currently receive support payments (under previous RMP eligibility criteria) **will not** have to consent to a PCSPA

---

Verification Form is forwarded directly to Benefit Programs

---

Relatives and fictive kin may be eligible for up to 24 months of RMP. Continued eligibility determined based on extenuating, mitigating circumstances or financial hardship

# Relative Maintenance Program: Average Children Served Per Month



\*November 2020, payments to eligible relative caregivers begin.\*

\*December 2022, payments extended to eligible fictive kin.\*

\*No new applications between October 2023 and June 2024 given funding issues.\*

---

# Family First Prevention Services Act

**The vision for Family First is to keep children safe, strengthen families, and reduce the need for foster care whenever it is safe to do so.**





---

*For more information...*

**Virginia Kinship Resource Guide**  
**([kinshipvirginia.com](http://kinshipvirginia.com))**